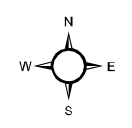


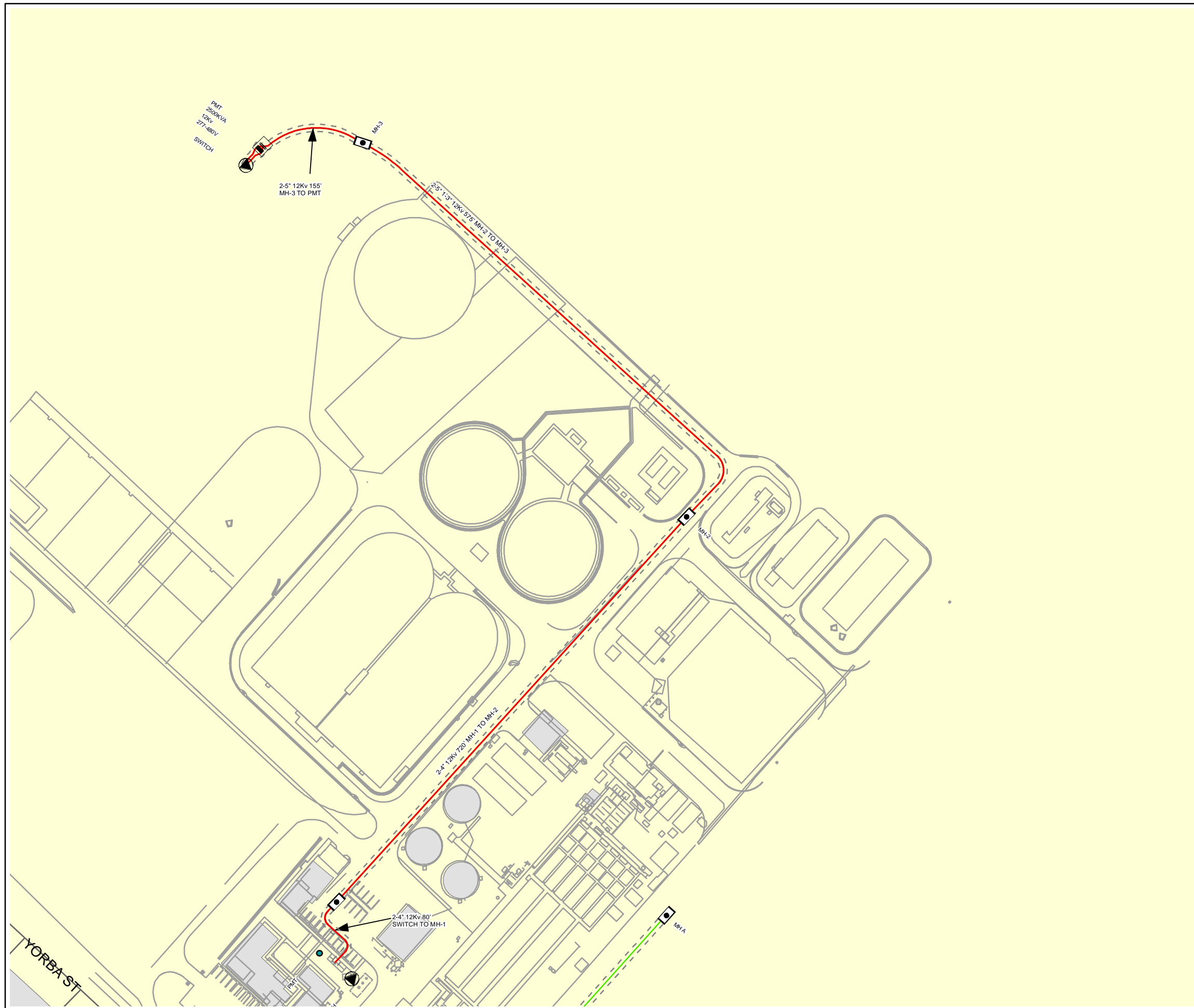


- ### Legend
- |  |                  |  |                         |
|--|------------------|--|-------------------------|
|  | Transformer Slab |  | Hand Hole               |
|  | CapBank Slab     |  | Traffic Signal Pedestal |
|  | Capbank Pad      |  | Street Light Pedestal   |
|  | PME              |  | Meter - Commercial      |
|  | Vault            |  | Meter - Gate            |
|  | Manhole          |  | Meter - House Meter     |
|  | SOE              |  | Meter - Street Light    |
|  | BURD             |  | Meter - Residential     |
|  | ELSP, VALUT      |  | Cap                     |
|  | Pull Box         |  | Flare                   |
- Distribution  
 Secondary Distribution  
 Power & Communication  
 Communication

#### Electrical Distribution System Equipment Numbering Protocol

- Substation Identifier**
- 1 - Dos Lagos
  - 2 - Crossings
  - 3 - Corona Pointe
  - 4 - Sunkist
- Equipment Identifier**
- 05 - 15kV Metering Switchgear (SWG)
  - 10 - Gas Switch (GS)
  - 15 - PME Switch (PME)
  - 20 - PMT Transformer (PMT)
  - 25 - Burd Transformer (BT)
  - 26 - Potential Transformer (PT)
  - 27 - Current Transformer (CT)
  - 28 - Control Power Transformer (CPT)
  - 30 - Burd Switch (BS)
  - 35 - Cap Bank (CAP)
  - 40 - Vacuum Fault Interrupter (VFI)
  - 45 - Automatic Recloser (AR)
  - 50 - Load Break Fuse (LBF)
- Structure Identifier**
- 55 - Concrete Pad (PAD)
  - 60 - Vault (VLT)
  - 65 - PME Structure (PME)
  - 70 - Slab Box (SLB)
  - 75 - Transformer Pad (PAD)
  - 80 - Burd Enclosure (BE)
  - 85 - Cap Pad (PAD)
  - 90 - VFI Structure (VFI)
  - 91 - Surface Operable Enclosure (SOE)
  - 92 - Pull Box (PB)
  - 93 - Splice Box (SB)
  - 94 - Hand Hole (HH)
  - 95 - Wood Pole (WP)
  - 96 - Manhole (MH)





### Legend

	Transformer Slab		Hand Hole
	CapBank Slab		Traffic Signal Pedestal
	Capbank Pad		Street Light Pedestal
	PME		Meter - Commercial
	Vault		Meter - Gate
	Manhole		Meter - House Meter
	SOE		Meter - Street Light
	BURD		Meter - Residential
	ELSP, VALUT		Cap
	Pull Box		Flare

Distribution  
 Secondary Distribution  
 Power & Communication  
 Communication

#### Electrical Distribution System Equipment Numbering Protocol

##### Substation Identifier

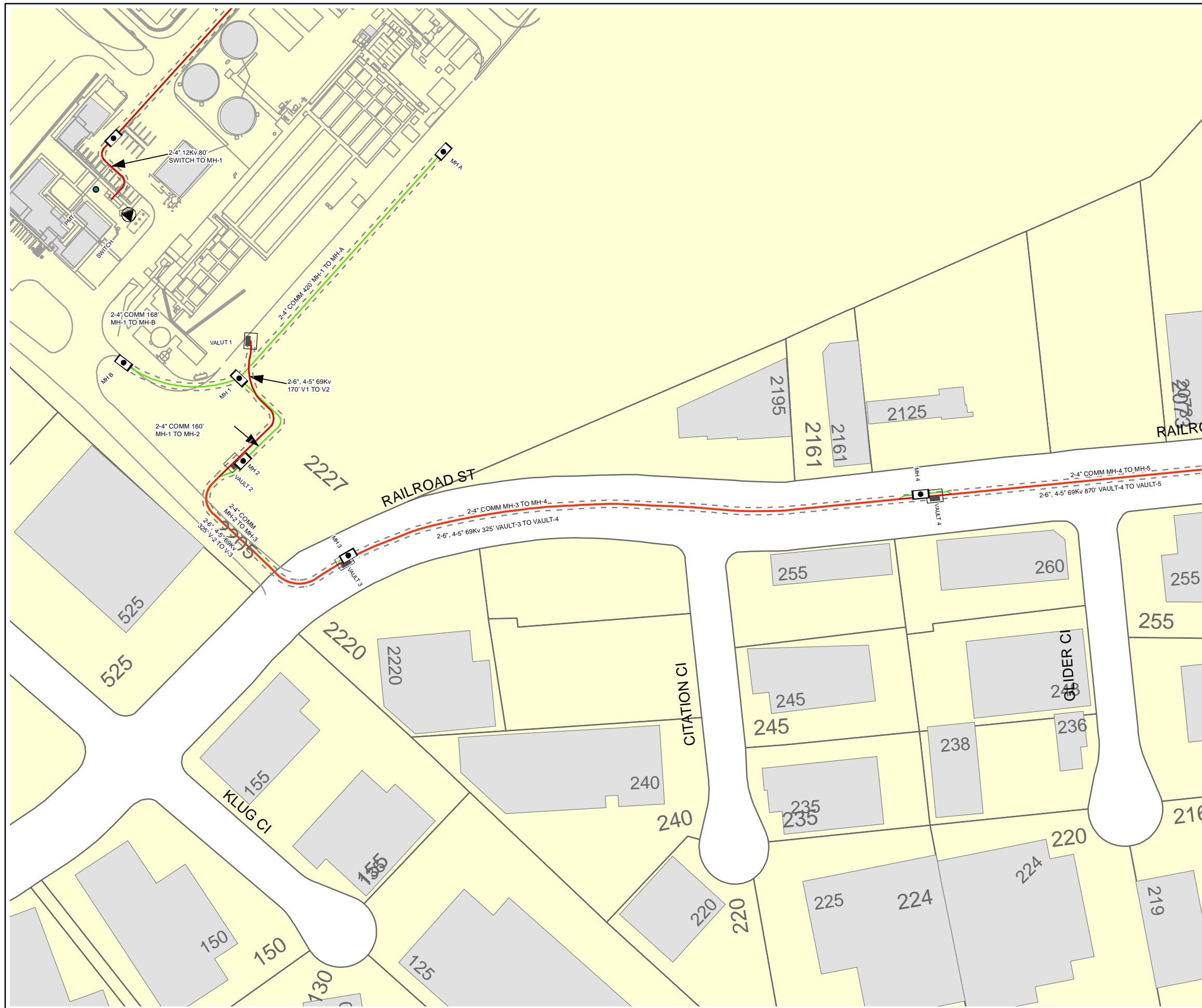
- 1 - Dos Lagos
- 2 - Crossings
- 3 - Corona Pointe
- 4 - Sunkist

##### Equipment Identifier

- 05 - 15kV Metering Switchgear (SWG)
- 10 - Gas Switch (GS)
- 15 - PME Switch (PME)
- 20 - PMT Transformer (PMT)
- 25 - Burd Transformer (BT)
- 26 - Potential Transformer (PT)
- 27 - Current Transformer (CT)
- 28 - Control Power Transformer (CPT)
- 30 - Burd Switch (BS)
- 35 - Cap Bank (CAP)
- 40 - Vacuum Fault Interrupter (VFI)
- 45 - Automatic Recloser (AR)
- 50 - Load Break Fuse (LBF)

##### Structure Identifier

- 55 - Concrete Pad (PAD)
- 60 - Vault (VLT)
- 65 - PME Structure (PME)
- 70 - Slab Box (SLB)
- 75 - Transformer Pad (PAD)
- 80 - Burd Enclosure (BE)
- 85 - Cap Pad (PAD)
- 90 - VFI Structure (VFI)
- 91 - Surface Operable Enclosure (SOE)
- 92 - Pull Box (PB)
- 93 - Splice Box (SB)
- 94 - Hand Hole (HH)
- 95 - Wood Pole (WP)
- 96 - Manhole (MH)



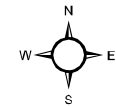
**Legend**

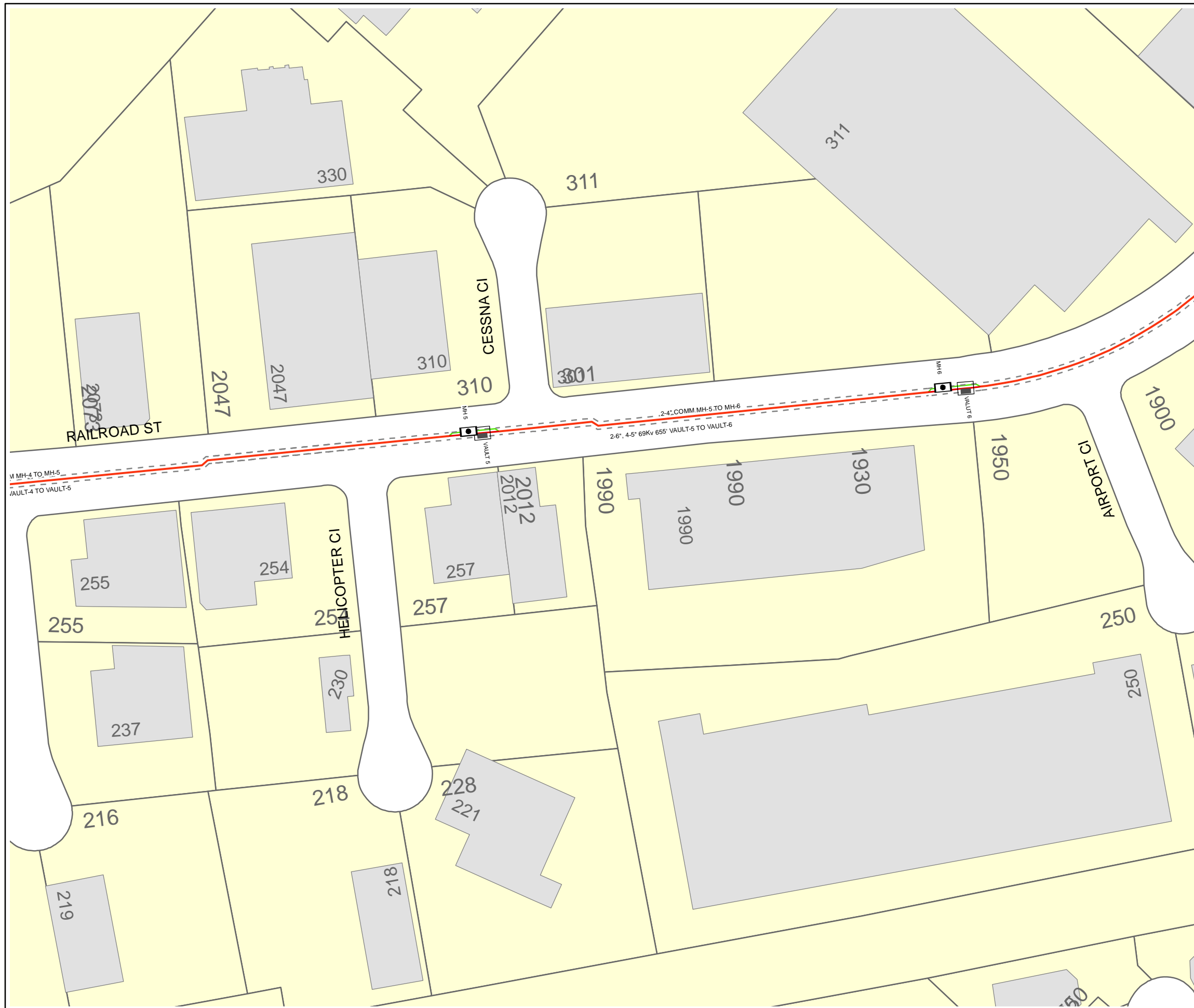
- |  |                  |  |                         |
|--|------------------|--|-------------------------|
|  | Transformer Slab |  | Hand Hole               |
|  | CapBank Slab     |  | Traffic Signal Pedestal |
|  | Capbank Pad      |  | Street Light Pedestal   |
|  | PME              |  | Meter - Commercial      |
|  | Vault            |  | Meter - Gate            |
|  | Manhole          |  | Meter - House Meter     |
|  | SOE              |  | Meter - Street Light    |
|  | BURD             |  | Meter - Residential     |
|  | ELSP, VALUT      |  | Cap                     |
|  | Pull Box         |  | Flare                   |

- Distribution
- Secondary Distribution
- Power & Communication
- Communication

**Electrical Distribution System Equipment Numbering Protocol**

- Substation Identifier**
- 1 - Dos Lagos
  - 2 - Crossings
  - 3 - Corona Pointe
  - 4 - Sunkist
- Equipment Identifier**
- 05 - 15kV Metering Switchgear (SWG)
  - 10 - Gas Switch (GS)
  - 15 - PME Switch (PME)
  - 20 - PMT Transformer (PMT)
  - 25 - Burd Transformer (BT)
  - 26 - Potential Transformer (PT)
  - 27 - Current Transformer (CT)
  - 28 - Control Power Transformer (CPT)
  - 30 - Burd Switch (BS)
  - 35 - Cap Bank (CAP)
  - 40 - Vacuum Fault Interrupter (VFI)
  - 45 - Automatic Recloser (AR)
  - 50 - Load Break Fuse (LBF)
- Structure Identifier**
- 55 - Concrete Pad (PAD)
  - 60 - Vault (VLT)
  - 65 - PME Structure (PME)
  - 70 - Slab Box (SLB)
  - 75 - Transformer Pad (PAD)
  - 80 - Burd Enclosure (BE)
  - 85 - Cap Pad (PAD)
  - 90 - VFI Structure (VFI)
  - 91 - Surface Operable Enclosure (SOE)
  - 92 - Pull Box (PB)
  - 93 - Splice Box (SB)
  - 94 - Hand Hole (HH)
  - 95 - Wood Pole (WP)
  - 96 - Manhole (MH)



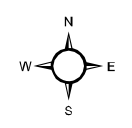


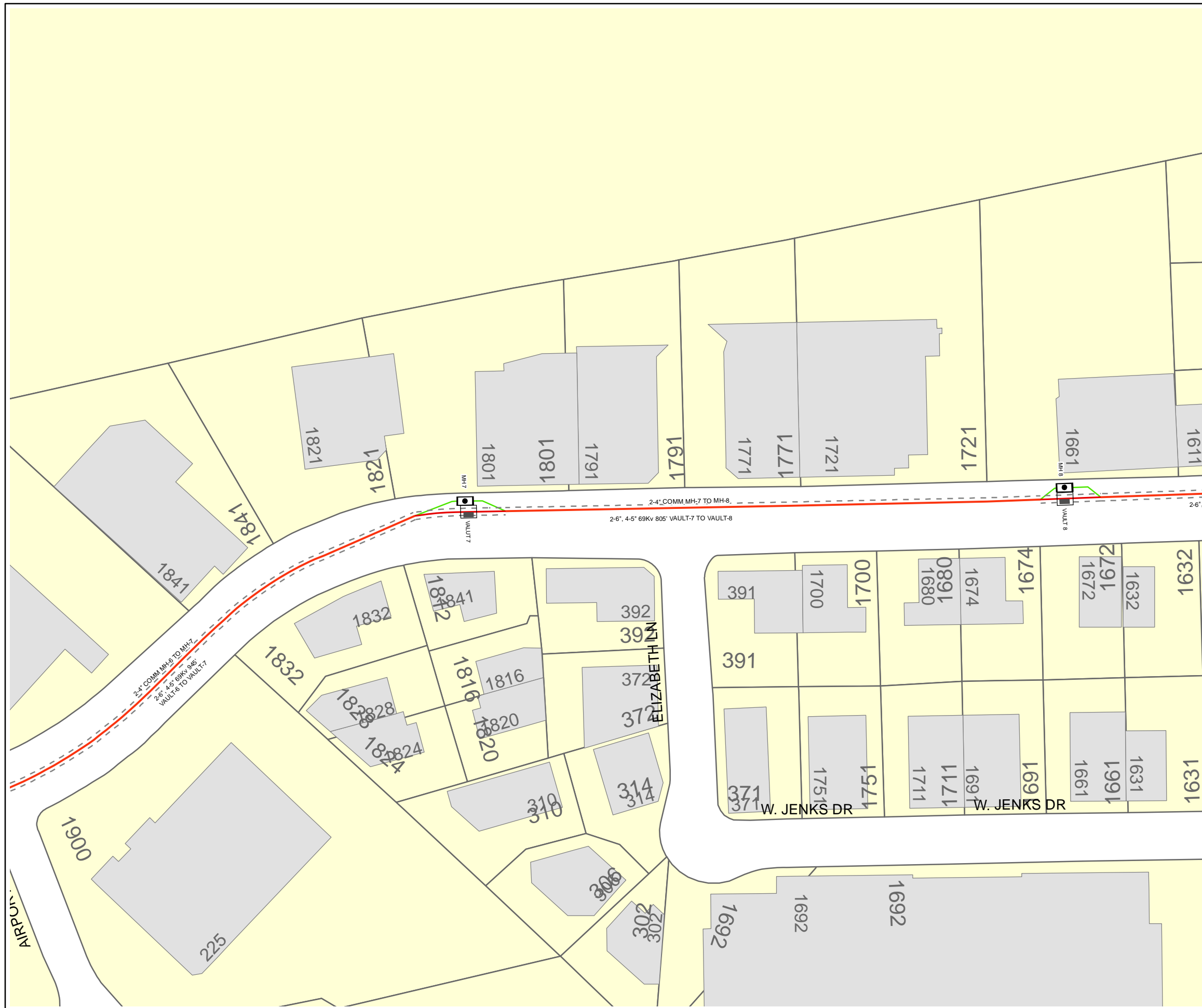
### Legend

	Transformer Slab		Hand Hole
	CapBank Slab		Traffic Signal Pedestal
	Capbank Pad		Street Light Pedestal
	PME		Meter - Commercial
	Vault		Meter - Gate
	Manhole		Meter - House Meter
	SOE		Meter - Street Light
	BURD		Meter - Residential
	ELSP, VALUT		Cap
	Pull Box		Flare

Distribution  
 Secondary Distribution  
 Power & Communication  
 Communication

- #### Electrical Distribution System Equipment Numbering Protocol
- Substation Identifier**
- 1 - Dos Lagos
  - 2 - Crossings
  - 3 - Corona Pointe
  - 4 - Sunkist
- Equipment Identifier**
- 05 - 15kV Metering Switchgear (SWG)
  - 10 - Gas Switch (GS)
  - 15 - PME Switch (PME)
  - 20 - PMT Transformer (PMT)
  - 25 - Burd Transformer (BT)
  - 26 - Potential Transformer (PT)
  - 27 - Current Transformer (CT)
  - 28 - Control Power Transformer (CPT)
  - 30 - Burd Switch (BS)
  - 35 - Cap Bank (CAP)
  - 40 - Vacuum Fault Interrupter (VFI)
  - 45 - Automatic Recloser (AR)
  - 50 - Load Break Fuse (LBF)
- Structure Identifier**
- 55 - Concrete Pad (PAD)
  - 60 - Vault (VLT)
  - 65 - PME Structure (PME)
  - 70 - Slab Box (SLB)
  - 75 - Transformer Pad (PAD)
  - 80 - Burd Enclosure (BE)
  - 85 - Cap Pad (PAD)
  - 90 - VFI Structure (VFI)
  - 91 - Surface Operable Enclosure (SOE)
  - 92 - Pull Box (PB)
  - 93 - Splice Box (SB)
  - 94 - Hand Hole (HH)
  - 95 - Wood Pole (WP)
  - 96 - Manhole (MH)



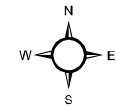


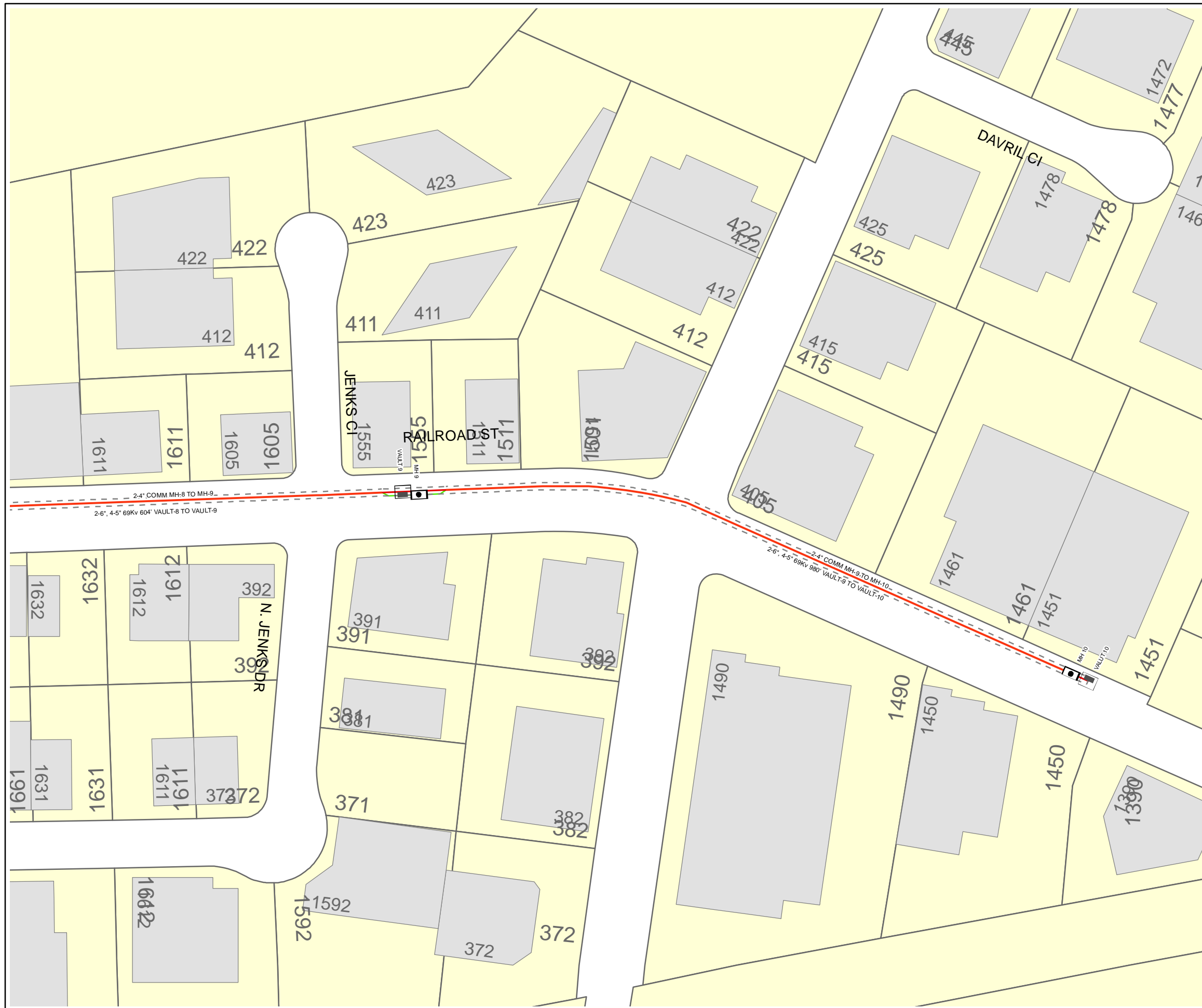
**Legend**

- |  |                  |  |                         |
|--|------------------|--|-------------------------|
|  | Transformer Slab |  | Hand Hole               |
|  | CapBank Slab     |  | Traffic Signal Pedestal |
|  | Capbank Pad      |  | Street Light Pedestal   |
|  | PME              |  | Meter - Commercial      |
|  | Vault            |  | Meter - Gate            |
|  | Manhole          |  | Meter - House Meter     |
|  | SOE              |  | Meter - Street Light    |
|  | BURD             |  | Meter - Residential     |
|  | ELSP, VALUT      |  | Cap                     |
|  | Pull Box         |  | Flare                   |
- Distribution  
 Secondary Distribution  
 Power & Communication  
 Communication

**Electrical Distribution System Equipment Numbering Protocol**

- Substation Identifier**
- 1 - Dos Lagos
  - 2 - Crossings
  - 3 - Corona Pointe
  - 4 - Sunkist
- Equipment Identifier**
- 05 - 15kV Metering Switchgear (SWG)
  - 10 - Gas Switch (GS)
  - 15 - PME Switch (PME)
  - 20 - PMT Transformer (PMT)
  - 25 - Burd Transformer (BT)
  - 26 - Potential Transformer (PT)
  - 27 - Current Transformer (CT)
  - 28 - Control Power Transformer (CPT)
  - 30 - Burd Switch (BS)
  - 35 - Cap Bank (CAP)
  - 40 - Vacuum Fault Interrupter (VFI)
  - 45 - Automatic Recloser (AR)
  - 50 - Load Break Fuse (LBF)
- Structure Identifier**
- 55 - Concrete Pad (PAD)
  - 60 - Vault (VLT)
  - 65 - PME Structure (PME)
  - 70 - Slab Box (SLB)
  - 75 - Transformer Pad (PAD)
  - 80 - Burd Enclosure (BE)
  - 85 - Cap Pad (PAD)
  - 90 - VFI Structure (VFI)
  - 91 - Surface Operable Enclosure (SOE)
  - 92 - Pull Box (PB)
  - 93 - Splice Box (SB)
  - 94 - Hand Hole (HH)
  - 95 - Wood Pole (WP)
  - 96 - Manhole (MH)





**Legend**

- |  |                        |  |                         |
|--|------------------------|--|-------------------------|
|  | Transformer Slab       |  | Hand Hole               |
|  | CapBank Slab           |  | Traffic Signal Pedestal |
|  | Capbank Pad            |  | Street Light Pedestal   |
|  | PME                    |  | Meter - Commercial      |
|  | Vault                  |  | Meter - Gate            |
|  | Manhole                |  | Meter - House Meter     |
|  | SOE                    |  | Meter - Street Light    |
|  | BURD                   |  | Meter - Residential     |
|  | ELSP, VALUT            |  | Cap                     |
|  | Pull Box               |  | Flare                   |
|  | Distribution           |  |                         |
|  | Secondary Distribution |  |                         |
|  | Power & Communication  |  |                         |
|  | Communication          |  |                         |

**Electrical Distribution System  
Equipment Numbering Protocol  
Substation Identifier**

- 1 - Dos Lagos
- 2 - Crossings
- 3 - Corona Pointe
- 4 - Sunkist

**Equipment Identifier**

- 05 - 15kV Metering Switchgear (SWG)
- 10 - Gas Switch (GS)
- 15 - PME Switch (PME)
- 20 - PMT Transformer (PMT)
- 25 - Burd Transformer (BT)
- 26 - Potential Transformer (PT)
- 27 - Current Transformer (CT)
- 28 - Control Power Transformer (CPT)
- 30 - Burd Switch (BS)
- 35 - Cap Bank (CAP)
- 40 - Vacuum Fault Interrupter (VFI)
- 45 - Automatic Recloser (AR)
- 50 - Load Break Fuse (LBF)

**Structure Identifier**

- 55 - Concrete Pad (PAD)
- 60 - Vault (VLT)
- 65 - PME Structure (PME)
- 70 - Slab Box (SLB)
- 75 - Transformer Pad (PAD)
- 80 - Burd Enclosure (BE)
- 85 - Cap Pad (PAD)
- 90 - VFI Structure (VFI)
- 91 - Surface Operable Enclosure (SOE)
- 92 - Pull Box (PB)
- 93 - Splice Box (SB)
- 94 - Hand Hole (HH)
- 95 - Wood Pole (WP)
- 96 - Manhole (MH)

